



TEXAS
Health and Human
Services

Abilene State Supported Living Center

OUR MISSION:
To empower people to make choices
that result in a life of dignity and
increased independence.

AbSSLC News

Abilene SSLC

Week of December 13th, 2021

COVID19 Testing

Week of 12.13.2021

Unless we see dramatic changes in the COVID19 situation, we will be test **one day** for each round going forward. This means that **all staff** will test the same day.

The number of times we test per week is dictated by the COVID19 positivity rate in Taylor County as reported by CMS.

Round 1

Tuesday, December 14th

0530-1130 & 1300-1500

Round 2

Thursday, December 16th

0530-1130 & 1300-1500

Campus Construction Update

A quick update on our on-going (and forever lasting) construction projects.



New Heating for 6330/6340/6350/6360 & 6370/6380/6390/6400

Pipe was delivered last week with underground construction expected to start in the next day or two. Due to the trouble in getting supplies and the fact that it will have to be done one building at a time, we anticipate this project lasting into early 2023. This project will ultimately will take these buildings (and the Laundry) off of our central powerhouse for heating.

Cottage Renovations

This has been an amazingly slow project but is getting better. At the moment, both 6710 & 6740 are **scheduled** to be completed at the end of December. There is still some on-going discussion about required insulation, but we are hopeful it's close. If things continue to move along, we will look at moving these homes back in early January and start on 6720 & 6730.

B571 (the Big House by the 591 Campbell Center)

The roof has been completed along with the majority of the painting & brick work. The needed Trex board (for the steps & ramp) is on back-order until **March** but we are planning to go ahead and move in the Social Workers, Time Administrators and the up-coming AbSSLC Museum sometime in late January (but please don't tell the Social Workers this ...).

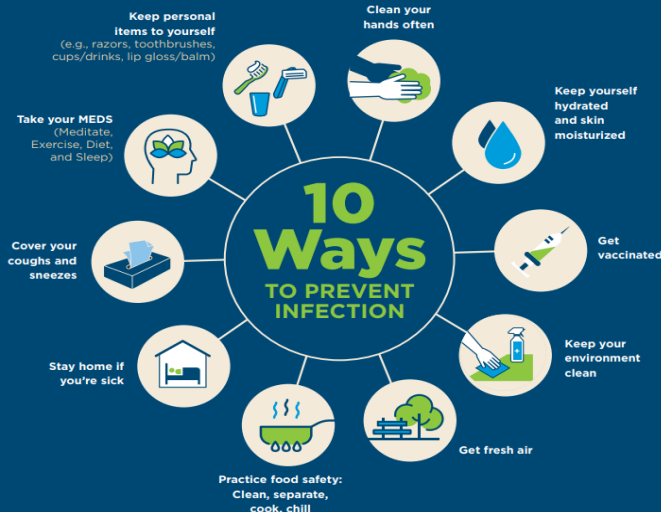
Questions? Please ask!

AbSSLC COVID19 Status

As of Friday, 12.10.2021

Number of Individuals Positive	0
Number of Individuals currently in Isolation	0
Number of Staff Positive	4

Protect Yourself and Others from Infection



Winter Wonderland

At the AbSSLC Gym

Monday, December 20th 12pm-10pm
Tuesday, December 21st 12pm-10pm
Wednesday, December 22nd 8am-5pm

Come and see the beautiful displays and take some photos!
Come to work early so you can come in and look around

Thank you to the **always amazing Recreation Crew** who work so hard to put this together for the people we serve. They have Christmas Parties, in the gym, for individuals but wanted **YOU** to have the opportunity to come visit also

Shout Outs!

Thank you to the **Security guys** that put the flags up on the drive coming into campus, it was good enough to stop for a picture. It was a cold morning, so THANK YOU !

Just an appreciation, I love seeing all the deer when I drive onto campus. It gives me a serene feeling, and makes this place special somehow.

Shout out for **Jeff Shields “Tobe”** in Transportation for being such a fun Santa for everyone to enjoy.

Thank YOU to **everyone** who braved the West Texas wind and came to blow through the campus during the parade! Each and everyone of you are AMAZING and YOU put so many smiles on so many faces while spreading Christmas cheer around the campus! YOU are on Santa’s GOOD list! 🤔 Thank YOU THANK you THANK YOU!!

I want to shout out **Recreation staff Connie Zeledon** and **Activity Center staff Amanda** for helping with Christmas Lane and Chapel Services this past week. Both have been so much help not only to staff but the residents as well. Thank you ladies!

Q&A

Q. Why do some staff in the medical field state that PPE doesn’t work and is unnecessary?

A. There are LOTS of varying opinions about COVID and PPE in the world. Ultimately, though, nobody in the media or on this campus (Medical, Nursing, or Administration) determines what is or is not required when it comes to PPE or COVID protocols. That is provided to us by State Office who gets it from CMS (the people that are over the ICF Regulatory Teams and determine that we continue to be funded). As long as CMS continues to say that PPE is necessary, we must follow their guidelines.

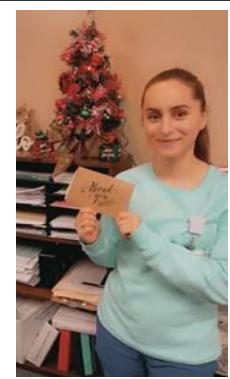
Q. Why can staff remove full PPE when going in town?

A. We found that it was very stigmatizing for the people we serve to have staff in full PPE while in town. Plus, increased risk of exposure to the individuals while in the public happens whether or not staff wear full PPE, so the decision was made that staff could remove full PPE when off campus.

RN & LVN of the Month – November 2021



George Irwin, LVN



Rejhana Elezi, RN

The nurses nominated by the Nursing Administration Department for Nurse of the Month for November included:

Keri Osborne, LVN
Maria Martinez, LVN
George Irwin, LVN
Karen Frye, LVN
Bikash Gurung, LVN

Katy McReynolds, RN
Rejhana Elezi, RN
Natasha McClain, RN
John Burgess, RN
Chelsey Cunningham, RN

All of these names were put in a hat and the two winning names were drawn. We want to congratulate our winners and all that were nominated. Thank you for your hard work and dedication. We appreciate everything you do!

Shout Out!

Have you seen someone do the above & beyond or just want to recognize great work?

It’s easy to do a Shout Out!

- “Reply” to any of the update texts you receive through the AskAdmin Text Group
- Email Jeff Goza with their name and your comments
- Text their name and your comments to 325.370.4525

Let’s **Shout Out** and recognize others!